

# FOR LEASE



HALIFAX  
COMMERCIAL  
REAL ESTATE ADVISORS



# 512-536

## SACKVILLE DRIVE

LOWER SACKVILLE, NS

## 1,646 SF COMMERCIAL RETAIL SPACE

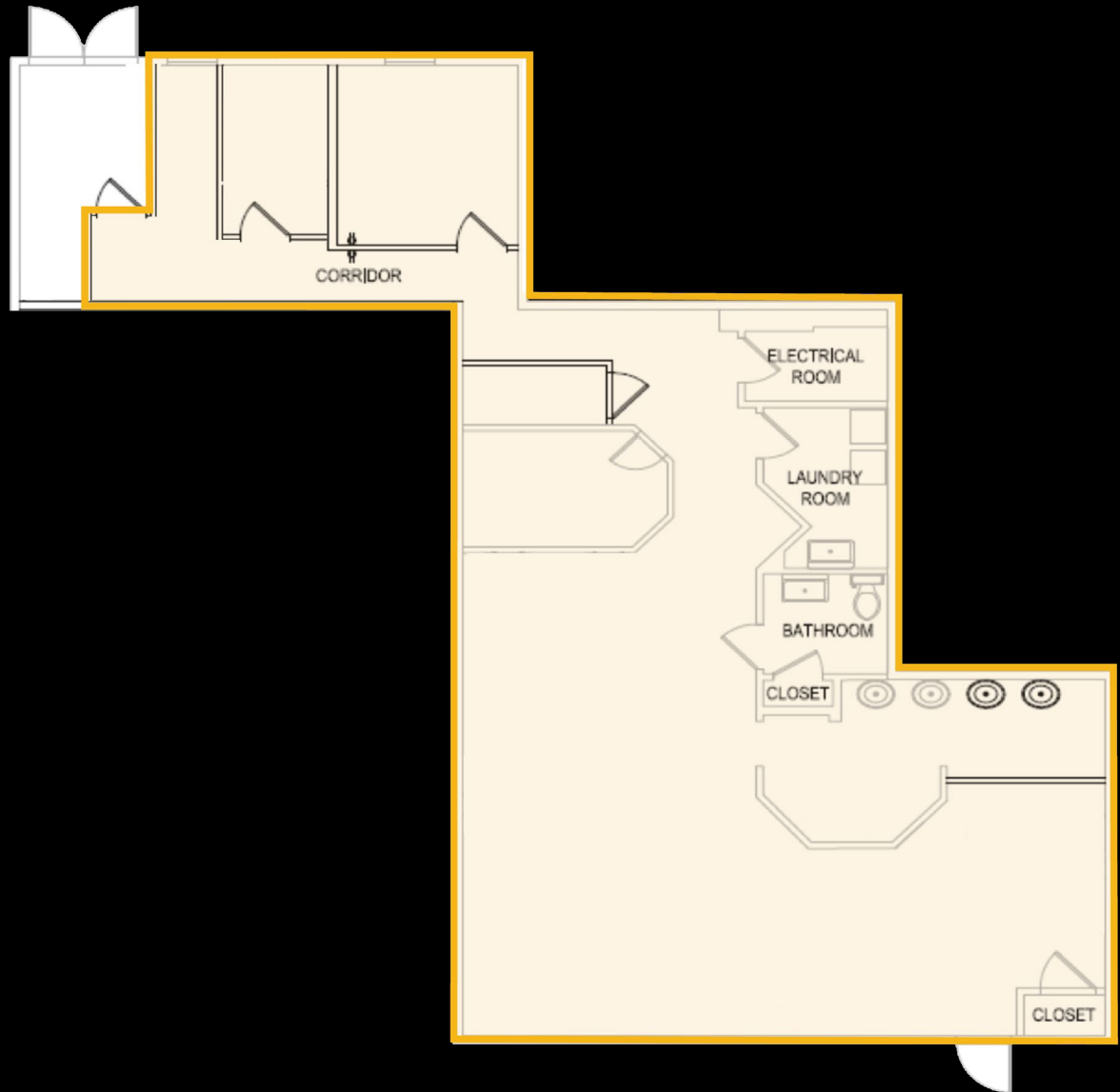


## PROPERTY DETAILS

SUITE	6B
LEASABLE AREA	1,646 SF
BASE RENT	\$20.00 PSF
CAM	\$10.00 PSF (2025 estimate)
AVAILABILITY	December 1, 2024

## PROPERTY FEATURES

- Located on Sackville Drive
- 118 parking spaces
- Anchor tenants - Scotiabank & NAPA
- Daily traffic - 56,000 cars
- All units have individual HVAC units
- Great exposure for retail





**512-536 SACKVILLE DRIVE**



**HALIFAX  
COMMERCIAL**  
REAL ESTATE ADVISORS

**HCREA.CA**  
PO BOX 2992  
Dartmouth, NS B2W 4Y3



**Ben Chaisson** ASRE, DULE, CCIM, ASC  
Managing Broker

📞 902.482.3213

✉️ bchaisson@hcrea.ca



**Greg Morrison**  
Client Advisory Services

📞 902.277.2552

✉️ gmorrison@hcrea.ca

The particulars are submitted to the best of our knowledge and are subject to change without notice. Halifax Commercial Real Estate Advisors does not assume responsibility for any errors or omissions.